

KMV-4KH41-U30R Quick Start & Hotkey Guide v1.0

Initial Configuration

- a) Before using the unit, users must configure the monitor resolution and video mode. First, set the monitor resolution output, then execute the hotkey for the desired video layout (factory default is Quad View Mode). Wait at least 5 seconds for the video arrangement to take effect.

Supported Resolutions:

Variable	16:9 Monitor	Variable	21:9 Monitor	Variable	32:9 Monitor
1U	3840 x 2160	2U	3840 x 1600	3F	3840 x 1080
1Q	2560 x 1440	2Q	3440 x 1440	* Factory default is 1920 x 1080 60Hz	
1F	1920 x 1080*	2F	2560 x 1080		

Layout Available

Video Mode:	Full Screen	Quad View	PIP	1+3 PbP	3+1 PbP
Layout:	0	4	7	1	3

1. Set the Resolution: "L-Ctrl" + "L-Ctrl" + "L-WIN(Hold)" + **AUX** + **M** + "Variable" + Release "L-WIN"

2. Set the Layout: "L-Ctrl" + "L-Ctrl" + "L-WIN(Hold)" + **AUX** + **F** + "Layout" + Release "L-WIN"

- b) If image anomaly happens, apply this reset hotkey:

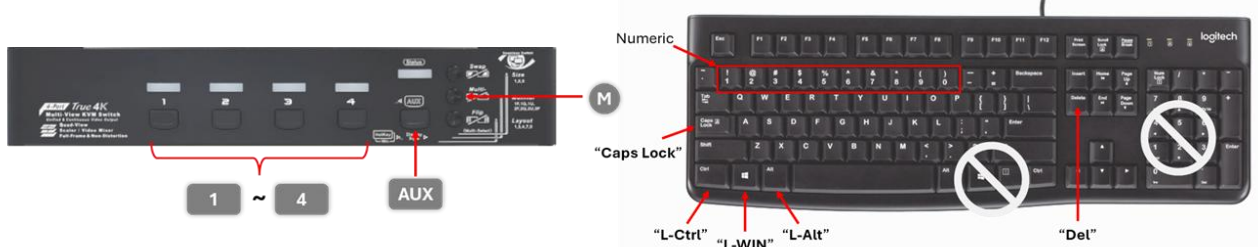
"L-Ctrl" + "L-Ctrl" + "L-WIN(Hold)" + "L-Alt(Hold)" + "Del"(NumPad)

- c) To reset to Factory Default:

"L-Ctrl" + "L-Ctrl" + "L-Alt(Hold)" + "F" + "A" + "C"

After a factory reset, the **Video Mode** is Quad View, **HDMI Out** is 1920x1080 60Hz and **Mouse Roaming** is On. When Full Screen, both **Audio Follow** and **USB Follow** is On and will follow selected port (PC).

Keyboard Key Press and Front Panel Button Reference



KMV-4KH41-U30R Quick Start & Hotkey Guide v1.0

❑ Quad View Mode

a) Features supported by Quad View Mode

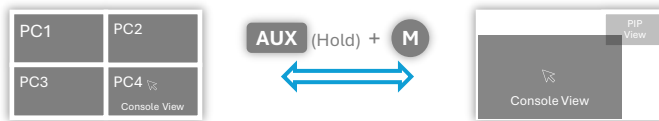
- Toggle between Quad View and Full Screen, press **M** or **"L-Ctrl" + "L-Ctrl" + "Caps Lock"**



- Functions supported in Quad View and Full Screen Mode:

Functions Modes	Auto/Manual Scan	Video Swap	Mouse Roaming	USB 3.2 / Audio Follow
Quad View	No	No	Yes	Follow the Console View
Full Screen	Yes	Yes (with the Console View)	No	

- Toggle between Quad View Mode and PiP Mode, press **AUX (Hold) + M**



b) Hotkey Operations when in Quad View:

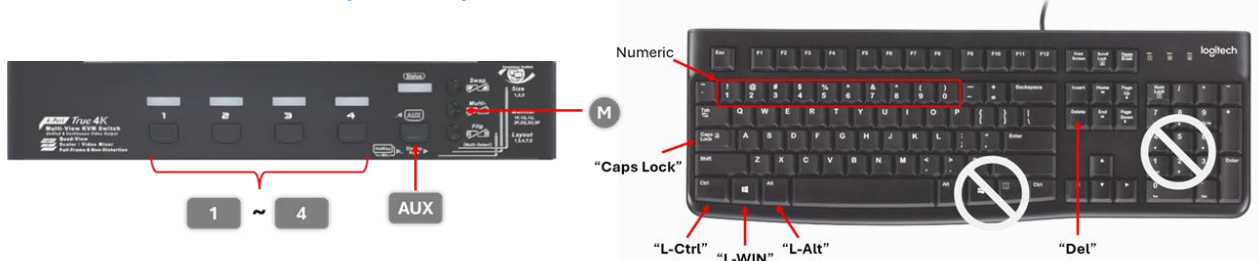
Note: Automatic Audio Follow and USB 3.2 Follow does not work in Quad View, use manual assignment

- Assign **Audio Follow** to Current Selected Port : **"L-Ctrl" + "L-Ctrl" + "A"**
- Assign **USB 3.2 Follow** to Current Selected Port: **"L-Ctrl" + "L-Ctrl" + "U"**
- Disable **Mouse Roaming** : **"L-Ctrl" + "L-Ctrl" + "L-Alt"(Hold) + "Q" + "0"**
- Enable **Mouse Roaming** : **"L-Ctrl" + "L-Ctrl" + "L-Alt"(Hold) + "Q" + "9"**

You can set Audio Follow and USB 3.2 Follow ON (2 beeps) or OFF (1 beep) when working in Full Screen and use manual assignment when it is off to assign /or fix the audio or device to a specific port (PC).

- Audio Follow** Port Selection (ON or OFF) : **"L-Ctrl" + "L-Ctrl" + "F5"**
- USB 3.2 Follow** Port Selection (ON or OFF) : **"L-Ctrl" + "L-Ctrl" + "F7"**

Keyboard Key Press and Front Panel Button Reference

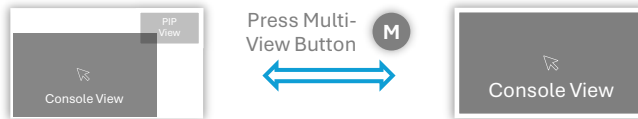


KMV-4KH41-U30R Quick Start & Hotkey Guide v1.0

□ PiP Mode

a) Features supported by PiP Mode

- Toggle between PiP and Full Screen Mode, press **M** or **"L-Ctrl" + "L-Ctrl" + "Caps Lock"**



- Functions supported in PiP and Full Screen Mode:

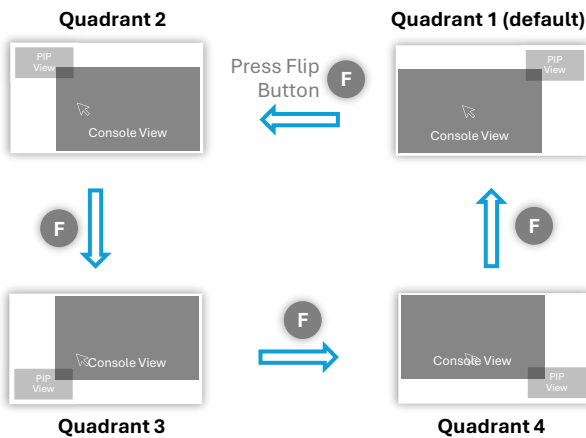
Functions Modes	Auto/Manual Scan	Video Swap	Mouse Roaming	USB 3.2 / Audio Follow
PiP	No	Yes (with the Console View)	No	Follow the Console View
Full Screen	Yes		No	

- Toggle between PiP Mode and Quad View Mode, press **AUX (Hold) + M**



b) Changing the PiP View Location, Size and Transparency

- To change the PiP View location in PiP Mode, press the **Flip Button F** or use Hotkey.



Move PiP View to 1st Quadrant:

"L-Ctrl" + "L-Ctrl" + "L-WIN"(Hold) + "F1"

Move PiP View to 2nd Quadrant:

"L-Ctrl" + "L-Ctrl" + "L-WIN"(Hold) + "F2"

Move PiP View to 3rd Quadrant:

"L-Ctrl" + "L-Ctrl" + "L-WIN"(Hold) + "F3"

Move PiP View to 4th Quadrant:

"L-Ctrl" + "L-Ctrl" + "L-WIN"(Hold) + "F4"

Keyboard Key Press and Front Panel Button Reference



KMV-4KH41-U30R Quick Start & Hotkey Guide v1.0

- To enlarge the PiP View : "L-Ctrl" + "L-Ctrl" + "L-WIN"(Hold) + "↑"
- To shrink the PiP View : "L-Ctrl" + "L-Ctrl" + "L-WIN"(Hold) + "↓"
- To decrease the transparency of the PiP View : "L-Ctrl" + "L-Ctrl" + "L-WIN"(Hold) + "→"
- To increase the transparency of the PiP View : "L-Ctrl" + "L-Ctrl" + "L-WIN"(Hold) + "←"

c) To swap video between Console View and PiP View, and change Console View size

- To swap video between Console View ↔ PiP View, press the **Swap Button** S or use Hotkey. "L-Ctrl" + "L-Ctrl" + "Tab"
- To enlarge the Console View : "L-Ctrl" + "L-Ctrl" + "L-WIN"(Hold) + "Page Up"
- To shrink the Console View : "L-Ctrl" + "L-Ctrl" + "L-WIN"(Hold) + "Page Down"

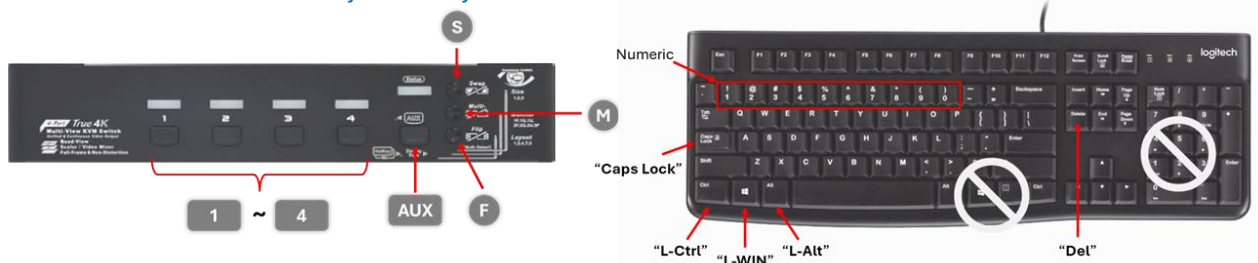
d) Push Button Operations:

- Select the computer for the Console View : 1 ~ 4
- Select the computer for the PiP View : AUX (Hold) + 1 ~ 4
- Swap video between Console and PiP View : S (Port LED lights **Red** for Console & **Blue** for PiP View)

e) Hotkey Operations available in PiP Mode:

- **Audio Follow** Port Selection (ON or OFF) : "L-Ctrl" + "L-Ctrl" + "F5"
- Assign **Audio Follow** to Current Selected Port : "L-Ctrl" + "L-Ctrl" + "A"
- **USB 3.2 Follow** Port Selection (ON or OFF) : "L-Ctrl" + "L-Ctrl" + "F7"
- Assign **USB 3.2 Follow** to Current Selected Port: "L-Ctrl" + "L-Ctrl" + "U"
- Select the computer for the Console View : "L-Ctrl" + "L-Ctrl" + "1" ~ "4"
- Select the computer for the PiP View : "L-Ctrl" + "L-Ctrl" + "S" + "1" ~ "4"

Keyboard Key Press and Front Panel Button Reference

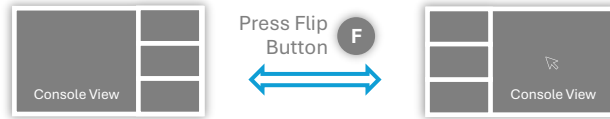


KMV-4KH41-U30R Quick Start & Hotkey Guide v1.0

□ PbP Mode

a) Features supported by PbP Mode

- Toggle between 1+3 PbP and 3+1 PbP Mode, press Flip Button **F**



- Functions supported in PbP Mode:

Functions Modes	Auto/Manual Scan	Video Swap	Mouse Roaming	USB 3.2 / Audio Follow
1+3 PbP	No	Yes (with the Console View)	Yes	Follow the Console View
3+1 PbP				

b) Hotkey Operations when in PbP View:

Audio Follow and USB 3.2 Follow does not function during mouse roaming in PbP View. Use manual assignment if need to assign audio out or USB to a specific port of the Small View.

- Assign **Audio Follow** to Current Selected Port :

"L-Ctrl" + "L-Ctrl" + "A"

- Assign **USB 3.2 Follow** to Current Selected Port:

"L-Ctrl" + "L-Ctrl" + "U"

When Mouse Roaming is disabled, the Large View will switch to the current selected port (PC) i.e., switch to the port (PC) of the Small View where keyboard/mouse cursor was currently on when the hotkey was executed.

- Disable **Mouse Roaming**

"L-Ctrl" + "L-Ctrl" + "L-Alt"(Hold) + "Q" + "0"

- Enable **Mouse Roaming**

"L-Ctrl" + "L-Ctrl" + "L-Alt"(Hold) + "Q" + "9"

You can set Audio Follow and USB 3.2 Follow ON (2 beeps) or OFF (1 beep). Audio Follow and USB 3.2 Follow, will follow port switching of the Large View if they are set ON. Disable the Audio Follow or USB 3.2 Follow and use manual assignment if need to assign/fix to a specific port (PC).

- **Audio Follow** Port Selection (ON or OFF) :

"L-Ctrl" + "L-Ctrl" + "F5"

- **USB 3.2 Follow** Port Selection (ON or OFF) :

"L-Ctrl" + "L-Ctrl" + "F7"

Keyboard Key Press and Front Panel Button Reference



KMV-4KH41-U30R Quick Start & Hotkey Guide v1.0

Hotkey and Push Button Operations for the Large View are as followed:

- Select the computer for the Large View : "L-Ctrl" + "L-Ctrl" + "1" ~ "4"
Or press Push Button : 1 ~ 4
- Select the previous selection for the Large View : "L-Ctrl" + "L-Ctrl" + "0"
- Swap the Console View to the Large View : "L-Ctrl" + "L-Ctrl" + "Caps Lock"
(Console View is where the keyboard and mouse cursor are currently at i.e. at one of the Small Views)

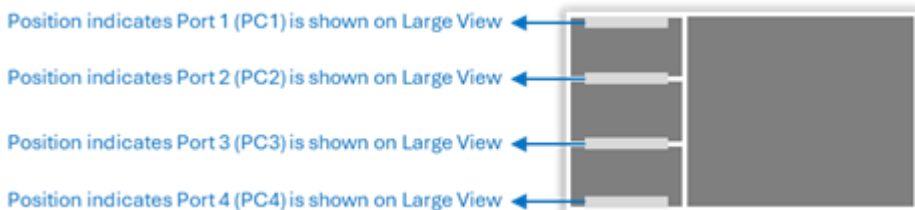
c) Indicators

- Port LED lights up **Red** to indicate location of the current Console View i.e., where the keyboard and mouse cursor are currently at.

Indicates the Console View is at Port 4 (PC4)
Note: This may not necessary be the Large View. Console View is where the keyboard and mouse cursor currently are at.



- Location of the **Grey Bar** indicates which PC Port is currently shown on the Large View



Keyboard Key Press and Front Panel Button Reference

